

CEDIA AWARDS



2010

Awards 2010

a guide to the award winners, highly commended and finalists

SPONSORED BY:



Ci9000ACE - High performance, Low profile



'...It's what every smart home needs - no wonder the Ci9000ACE is Home Cinema Digest readers' favourite in-wall loudspeaker.'

Ci9000ACE, Home Cinema Digest, March 2010

For half a century, KEF has been at the forefront of quality loudspeaker design. The in-wall Ci Series 9000ACE from KEF is an innovative advance into custom installed loudspeakers. The Uni-Q® driver array brings out the full emotional depth and texture of vocals - hardly surprising, since it's exactly the same unit as you'll find on the XQ Series. Also utilising KEF's Acoustic Compliance Enhancement technology, (ACE), what you actually hear is a level of bass extension that's normally only obtainable with much larger speakers.

**The KEF Ci Series 9000ACE
More range, more depth. More alive...**

www.kef.com

GP Acoustics (UK) Ltd. Eccleston Road, Tovil, Maidstone, Kent, ME15 6QP
Telephone: +44 1622 672 261 Fax: +44 1622 750 653



KEF
INNOVATORS IN SOUND



Credit: Nik Milner

The Judging Panel



Robert Hallam, Chair of Judges, is the CEDIA Region 1 Chairman and a long time Director at Dublin-based design and installation company, InControl.



Iris Dunbar is the recent Past President of the British Institute of Interior Design (BIID).



Peter Aylett is the Director of Professional Development for CEDIA Region 1.



Chris Price is the founder and Managing Director of Shiny Media.



Jan-Carlos Kucharek is a qualified architect and Assistant Editor of the RIBA Journal.



Dave Mitchell is the Technical Director of the Home Builders Federation (HBF).



A consumer press Editor with 25 years of publishing experience, **Steve May** is Editor in Chief at Future Publishing.



Becky Hoh is the Assistant Editor of the leading interior design B2B publication, idFX.



The CEDIA Awards returns to celebrate Best Practice in residential custom installation and, as always, it is a showcase of technical expertise, design creativity and professional integration.

The projects that you'll see, on the pages that follow, include some of the best examples of home electronic systems integration in the industry. From penthouses in St Pancras to 19th century Belgian castles, and everything in between; the CEDIA Awards 2010 reflects the true depth of design and installation talent amongst our members, from across CEDIA Region 1.

Last year's CEDIA Awards was a truly international affair and the 2010 scheme is certainly no different, we are delighted that, with representation from no fewer than ten countries, the CEDIA Awards continues to reflect the growth of the Association throughout the territories.

The CEDIA Awards, which is this year held in association with AWE Europe, KEF Audio UK, Philips Pronto and Sonos, is now firmly established as the high profile focus for excellence within the industry. And, in order to ensure that the scheme continues to set the standards and remains a credible and worthy celebration of the best the industry has to offer, we have toughened up the Best Practice guidelines and technical criteria. With competition and expectations high, those who made it thus far should be duly proud of their achievement.

So, without further ado, it is my very great pleasure to present the winners, finalists and those highly commended in this, the 2010 CEDIA Awards...

Robert Hallam
CEDIA Region 1 Chairman



PEP 2.4 Sonos module
(displayed on TSU9600)

P r o n t o h a s e v o l v e d

- *Extended integration functionality*
- *iPhone-style interface capability*
- *Sonos and TwonkyMedia modules*
- *Faster and easier programming*

The **NEW PEP 2.4 software** now features enhanced UPnP (Universal Plug and Play)/ DLNA (Digital Living Network Alliance) compatibility.

Rotary wheel enhancements. Actions can be ascribed to the rotation / counter-rotation of the controller's rotary wheel eg controlling volume or light levels.

Improved font selection. Any Windows PC font can now be easily selected and used in PEP2.4.

Dynamic user interface. PEP2.4 brings improved dynamic graphic and text property control, adjustment and object manipulation through improvements to ProntoScript.

Re-sizeable and dockable windows to assist in more complex programming tasks, such as, creating user interface graphics.

Display and editing of multiple pages on a single screen to help with smoother, faster programming workflow.

Re-usable macros. Once set up and used, programming macros can be simply stored and re-used when configuring repeated actions in multiple locations in a project.

Best Media Room under £15,000 (16,500 euros)



WINNER Olive AV

🇬🇧 KENSINGTON APARTMENT

With four children, all under the age of six, watching movies is a real family event for the owners of this Kensington apartment. With no room for a dedicated home cinema, this award-winning solution doubles up as a play room and homework den. The room's multi-functionality meant that its audiovisual elements needed to fill the space when required, but be discreet when not in

use. In addition, movies on-demand and BluRay were essential, so too was the ability to cater for the children's future media consumption; with provision made for a gaming facility to be added, as required.

By working closely with the architect, Olive was able to deliver the performance the client demanded, with the discretion they needed. A 60" screen has been

seamlessly integrated into the space, delivering visual impact only when turned on. Clever colour matching and hidden speakers ensure that the room's components blend together and that this project is a perfect demonstration of "seamless integration within the challenges of a minimalist space".

Olive AV
+ 44 (0) 20 8347 8202
www.olive-av.co.uk

FINALIST Smart Business

Smart Business
+34 91 556 3611
www.smartbusiness.es

🇪🇸 LOFT RED MADRID

An innovative solution for a modern apartment in central Madrid, this all-encompassing system successfully integrates technology with interior design to deliver a truly multi-functional, multi-media space. With a kit list including the likes of Marantz, Amina, Yamaha, Dali and Sony, this apartment boasts the kind of audio set-up that befits its music-producing owner. Visually, a 50" Pioneer plasma allows for everyday TV viewing, whilst a SIM2 projector and drop-down screen delivers an unrivalled home cinema experience. A piece of statement cabinetry houses the brains behind the entire system and allows for the concealment of a range of additional equipment including Canal +, PlayStation 3, a Kiss media server and Anthony Gallo subwoofer. Lighting has been used to dramatic effect to showcase the apartment's architectural features and give prominence to the works of art in-situ.



Best Media Room
over £15,000 (16,500 euros)



WINNER
MR Domotica

RURAL MEDIA

MR Domotica triumphed in this category for the realisation of a high-end media room that demonstrated no aesthetic concession. Designed as part of the renovation of a rural farmhouse in The Netherlands, the system incorporates the latest in home electronic technology; all seamlessly integrated into the fabric of this rustic interior and brought together by a unifying Crestron control system.

With just one touch of the wireless touchpanel, blinds close, lighting dims and the open-plan lounge is transformed into a fully functioning media room. An authentic home cinema experience is delivered with the use of a Projection Design Avielo projector, used in combination with a Steward projection screen. Amongst the room's impressive array of audio-visual sources are a Kaleidescape

media server, PlayStation 3, Crestron radio tuners, satellite TV and BluRay.

A Rotel RSX-1550 5-channel receiver is at the heart of the audio system, whilst a Sonance amplifier delivers 7.1 Dolby surround-sound to the living room area and is controllable via the Crestron system for seamless, two-way communication.

MR Domotica
+ 31 1531 00001
www.mr-engineering.nl



HIGHLY COMMENDED
Projecting & Sounding ART

Projecting & Sounding ART
+30 2109 949072
www.projecting-art.com

SUN DECK

An innovative solution for a contemporary property in Greece, which allows the homeowner to enjoy a variety of viewing options; whether that be the 42" LCD television, the projection-based home cinema set-up or simply the property's uninterrupted views of the Saronicos gulf.

Projecting & Sounding ART succeeded in installing an impressive amount of technology, without detracting from either the contemporary style or far-reaching panorama. Embracing an in-ceiling television lift, in-ceiling speakers, an in-wall sub-woofer and plaster in-wall speakers, this project features seamlessly integrated technology where the only thing on permanent view, is the view itself.

FINALIST
Sensory International

Sensory International
+ 44 (0) 1625 505720
www.sensoryinternational.com

CHESHIRE MEDIA LOUNGE

The brief to Sensory International was to create a room where the family, particularly the children, could escape and enjoy a variety of media, including Sky+HD, DVD, Xbox and Wii. It was important that enjoyment of the room's multi-media provision was not at the expense of its other purpose: playing pool; so lighting levels needed to accommodate both activities. A 50" Pioneer plasma, 100" Screen Research projection screen and SIM2 Domino DLP projector form the basis of the audio-visual set-up, together with an Arcam DVD and AV receiver. The room's sources are supplemented by the integration of the client's existing Sonos music player into the system.



FINALIST
Sensory International

Sensory International
+ 44 (0) 1625 505720
www.sensoryinternational.com

GAMES DEN

It's fun and games all the way for the owners of this particular media room. A haven for the pursuits of playing snooker and watching sport; the room is comprehensively equipped with the very latest in home electronic technology and even boasts its own arcade machine. Whether you're watching football on the 50" Fujitsu HD plasma or the 130" projection screen; the experience promises to be an immersive one. A Lumagen video processor ensures the best quality picture on the super-size screen, whilst a Linn surround processor and amplifier deliver amazing sound quality.



Best Home Cinema
under £40,000 (42,000 euros)



© 2010 FAB - Images supplied by Trevor Burton

WINNER
FAB Audio Visual

🇬🇧 SUBTERRANEAN

The client wanted the best cinematic experience possible, and boy did FAB AV deliver. Deemed by the judges to be a "well considered and technically outstanding home cinema installation" this stunning system was designed for a client who was big on expectation, but short on time; having just 48 hours to decide how the AV requirements were to fit into his new home.

But, with some creative thinking and co-operation from all parties, an

impressive solution was realised. This now award-winning set-up includes three Genelec A1W26 active in-wall speakers, which sit behind and beside a 110", 16:9 Screen Excellence acoustically transparent screen. The audio system is completed by two Genelec A1W25 active speakers and a Genelec HTS4B active subwoofer. Sound is processed by an ADA audio processor and the entire system has been painstakingly optimised.

Video signal is taken care of by a Digital Projection iVision30 Projector and the room is controlled with some clever interfacing between a Philips Pronto remote and Crestron processor.

All in all, a system that exceeds expectation.

FAB Audio Visual
+ 44 (0) 1727 226121
www.fabav.co.uk

FINALIST
AV Custom Install

AV Custom Install
+27 21 855 2972
www.avcustominstall.co.za

🇿🇦 HOUSE POULIART

AV Custom Install was a worthy finalist with this impressive home cinema system, designed for a movie-lover with an exacting set of performance criteria. Sound quality was paramount and the client, who collects old cinema projectors, wanted to get as close as possible to the experience of actually going to the movies.

AV Custom Install responded with a system that optimises audio enjoyment at every turn; from the evenly spaced and unobstructed Custom Hidden Solution PSB speakers and PSB subsonic 5i subwoofers, to the acoustic ceiling, the specially designed curtains and the NAD AV receiver.

The client vows to watch each and every new release on BluRay and DVD from now on, and with this dedicated home cinema at his disposal, it will certainly be an immersive and enjoyable experience.



FINALIST
Projecting & Sounding ART

Projecting & Sounding ART
+30 2109 949072
www.projecting-art.com

🇬🇷 LA VIE EN ROSE

Projecting & Sounding ART make the final again, this time with a high-tech home cinema, with a distinctly retro feel. The client, who was passionate about movies, wanted to enjoy a home cinema set-up that delivered cinematically-proportioned sound, but made little noise as far as the rest of the house was concerned.

The impressive audio-visual provision includes, a JVC DiLa HD1 projector, Stewart Luxus Deluxe Screenwall 120", 16:9 projector screen and Marantz SR7003 AV receiver. Triad in-wall speakers and subwoofer and an Arcam P10007 channel amplifier deliver the desired audio performance; whilst layers of galvanized lead and ecologically recycled rubber form an acoustic baffle to ensure that the home cinema experience stays in the home cinema.



Best Home Cinema
from £40,000 - £100,000 (42,000 - 105,000 euros)



© 2010 FAB - Images supplied by Trevor Burton

WINNER
FAB Audio Visual

THE GREY ROOM

FAB Audio Visual triumphs again with this "awesome cinema which was technically well thought out". With its monochromatic interior, there is little to distract from this room's primary purpose - watching movies. Designed for an avid film collector with a passion for Japanese films, this impressive system delivers a truly immersive cinematic experience.

Audio is delivered by two Genelec subwoofers at floor level and three Genelec active monitors located behind a 120" Screen Excellence acoustically-

transparent screen. Six Genelec active speakers, mounted adjacent to the three rows of seats, further enhance the sound quality which is processed by an Onkyo SC-866 controller and an Audyssey Multi EQ.

Video is taken care of by a JVC HD100 D-ILA projector, complete with Schneider anamorphic lens for widescreen authenticity. Amongst the choice of video sources is Denon DVD, BluRay and Sky+ HD. A Kaleidescape media server brings together the client's expansive collection of over 1,500 DVDs.

This impressive set-up is controlled via a standalone Crestron processor and Crestron TPMC-8X touchscreen. On selection of a video source; the electric blackout blinds drop, the projector and amplification turn on, the lights dim... and what is now an award-winning cinema experience begins.

FAB Audio Visual
+ 44 (0) 1727 226121
www.fabav.co.uk



HIGHLY COMMENDED
Imagine This

Imagine This
+44 (0) 845 680 6856
www.imaginethis.uk.com

ESTON HOME THEATRE

It was the fingertip recognition, amongst other things, that caught the imagination of the judges and won Imagine This a Highly Commended accolade for this multi-sensory and state-of-the-art home cinema.

One swipe over the biometric scanner and the Crestron touchpanel releases from the dock and the lights dim to their 'take your seats' preset. Once seated, the clients can enjoy the full media arsenal, including Kaleidescape media server and BluRay.

Tactile transducers fitted to the cinema's seats literally shake in time with the soundtrack's base and are controllable by the touchpanel under the heading 'more or less rumble'!

A Runco 1080p projector partnered with a Screen Research THX ISF 2.35:1 Multi Mask Screen deliver the visual wow factor, whilst Triad in-wall speakers and subwoofers pack the desired audio punch.

FINALIST
Audio 7

Audio 7
+ 44 (0) 1306 621144
www.audio7.co.uk

ESSEX CINEMA @ HOME

The brief was straightforward; to recreate a public cinema experience, through a dedicated home cinema, installed into an unused outbuilding. Audio 7 responded with a system that was anything but ordinary.

Carefully-considered touches like the curtains across the screen, the tiered seating, the walkway into the room and the rope across the entrance, all go towards delivering a cinematic experience which is as close as possible to that of visiting your local multiplex.

A JVC HD750 projector with Schneider anamorphic lens and Screen Research acoustically transparent fixed screen, deliver a visual authenticity whilst Artcoustic speakers ensure that the set-up not only looks great, but sounds great too.



FINALIST
Dark Side of the Room

Dark Side of the Room
+33 4 7273 0171
www.dsr.fr

DREAM COME TRUE

DSR delivered a home cinema system, fine-tuned to perfection, for a musician with eclectic taste. The room, which got the full acoustic treatment, has been configured for 7.1 surround sound and boasts a 3m wide Screen Research screen, JVC THX certified, D-ILA projector and bi-directional zigbee control from RTI.

Amongst the extensive range of sources are two BluRay players, a vintage auto-reverse Sony Laserdisc, CD and minidisc player and even a VHS to allow playback of concerts that haven't been re-edited in DVD. "I have heard things in this room that I have only heard in big music studios" remarked the client. The stuff of dreams, indeed.



Best Home Cinema Installation
over £100,000 (105,000 euros)



© 2010 FAB - Images supplied by Trevor Burton

WINNER
FAB Audio Visual

GENTLEMAN'S CLUB

FAB Audio Visual scores the CEDIA Awards hat-trick with what the judges praised as a "technically flawless solution which will deliver an awesome sound."

A dedicated space within a converted barn; the client wanted an unrivalled home cinema experience and that is certainly what he got! Audio-visual performance aside, one of the main considerations was the building's proximity to the groundskeeper's cottage as "good groundskeepers are hard to find." So, with soundproofing high on the agenda, FAB Audio Visual set out to deliver a solution that

incorporated the very best of today's technology.

At the heart of the audio system sits an ADA Suite 7.1 controller and a Dolby Lake sound equalizer. The room boasts two Genelec HTS4B subwoofers at floor level and three Genelec HT315 active monitors behind the 120", 2.35:1 Screen Excellence acoustically transparent side-masking screen. Six Genelec AIW25 active speakers are used for rears: four mounted adjacent to the two rows of seats and two in the back wall, either side of the projection porthole.

The Digital Projection Titan 720P DLP projector and ISCO 3 anamorphic lens have to be seen to be believed and the client can choose from a range of sources, including a Kaleidescape player and 1U video server, a Sky+ HD box, an Xbox Elite games console and a Nintendo Wii. The room is controlled by a dedicated Crestron CP2E processor and TPMC-8X touchscreen.

The internal walls were treated with acoustic absorbers and diffusers and the room was fitted with double acoustic doors.

FAB Audio Visual
+ 44 (0) 1727 226121
www.fabav.co.uk

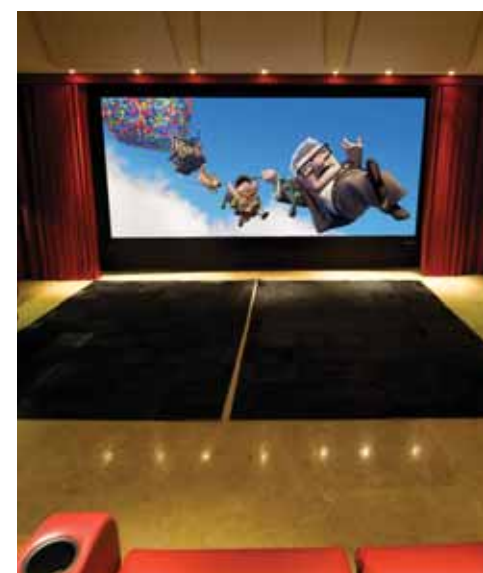
FINALIST
CSO

CSO
+45 4344 0101
www.cso.dk

BRINKEN HOME CINEMA

CSO were asked to design a home cinema that rivalled the best commercial outfits in Denmark, and the result – a system that certainly works hard and plays hard!

This 300 sq ft, Crestron-controlled cinema has been designed to ensure that its hardware performs outstandingly. Impressive audio performance is delivered with speakers from French company, GKF, who have manufactured product for more than 650 commercial cinemas. Industrial absorbers within the specially designed ceiling ensure that sound is contained within the space and an EQ system and Lexicon MC-12 HD complete the acoustic design. Power is delivered by four Bryston Amps and over 100m of speaker cable. A Runco VX-22d used in combination with a Screen Research ClearPix2 screen, ensures that the set-up not only sounds good, but looks good too.



FINALIST
Imagine This

Imagine This
+44 (0) 845 680 6856
www.imaginetthis.uk.com

KINGSTON HOME THEATRE

This discerning client knew exactly what he wanted from his home cinema – the biggest image possible! Imagine This responded by installing a 140" Screen Research Curved X-Mask screen, used in conjunction with a Runco VX22D projector with a McKinley motorised anamorphic lens to optimise 2.35:1 and 16:9 images. Procella loudspeakers have been used to create an enthralling audio experience and Philips Pronto brings audio and visual components together into one easily controllable solution.

A Niveus ProN4 media server, with its dual 500GB hard drive, provides storage for the client's extensive DVD and BluRay collection and Sky HD and Playstation 3 complete the range of high definition sources. Fully reclining, D-Box Motion ready, Fortress Matinee seats provide an authentic and comfortable seating position which can be readily upgraded in the future.

FINALIST
SMC

SMC
+44 (0) 20 7819 1700
www.smc-uk.com

COTSWOLD SCREENING ROOM

According to this well-connected client, this impressive screening room, installed in an old Victorian garage in the Cotswolds, has become "a cinema of choice for some of the world's most exacting film makers". The star of this particular AV set-up is undoubtedly the 10-megapixel Meridian projector which, when used with the Screen Research 130" 16:9 fixed projection screen, delivers the kind of picture quality which befits this discerning audience. Thanks to intelligent scaling, this amazing projector works equally well with old low-res games and pre-release 4K movie content provided by the client's Hollywood colleagues, played back using a Western Digital media player.

Other source equipment includes Meridian G96 DVD transport, Sony PS3 Blu-Ray games console, Nintendo 64 vintage games console, Sky HD satellite receiver and Apple TV. Audio is delivered with the use of Meridian speakers and subwoofers, in a 7.2 configuration. A wireless touchpanel controls the whole affair.





WINNER
Prestige Audio

THE WHITE HOUSE

This brilliant white home proved the clear winner thanks to its sensitive integration of AV, lighting and security control, for a cost-conscious client.

Working to a tight initial budget, Prestige Audio kept high value items to a minimum whilst retaining a keen eye on future expansion for a time when financial constraints eased.

A single Crestron touchpanel is built into the central, leather-clad pillar which is a key feature of the open plan living space on the ground floor. This controls all zones inside and outside the property,

including outdoor speakers and the electric sliding patio doors.

A Lutron HomeWorks system offers spectacular DMX control of colour change RGB lighting, with an internal waterfall proving especially eye-catching!

The first floor is pre-cabled for the future and simple 12-button Crestron keypads provide lighting and basic audio-visual control in secondary rooms. Larger touch-screens and Lutron blinds will be added later.

The dedicated cinema is equipped with a 1.78:1 projector and a 2.35:1 screen - a compromise the client was happy to make until he upgrades later on.

Meanwhile, the gate entry system is connected to the main touch-panel but uses a low cost composite video and balanced audio matrix switcher.

The result is an "envy-inducing" integrated home that delivers excellent value for money.

Prestige Audio
+44 (0) 1923 801400
www.prestigeaudio.co.uk

FINALIST
SMC

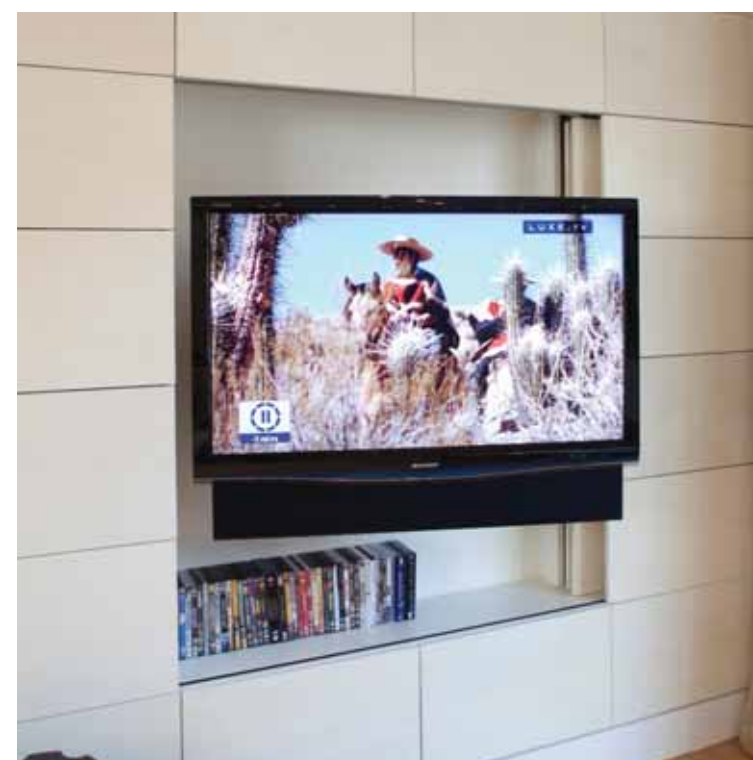
SMC
+44 (0) 20 7819 1700
www.smc-uk.com

NOTTING HILL HOME

SMC took on the client's challenge to provide robust, functional technology, future-ready wiring and discreet installation on this family home project.

They designed and integrated a multi-room audio, TV, security, data network and telecommunications system that fits sympathetically within the contemporary styling of this period property. They've also helped the homeowner rediscover his love of music by re-using his existing record player and Linn hi-fi system. Pronto remote control ensures an intuitive user experience for all.

A job which, according to the homeowner, proves the benefits of working with a CEDIA member and shows that it's not just for people with touchpanels and automated cat-flaps!



FINALIST
SMC

SMC
+44 (0) 20 7819 1700
www.smc-uk.com

LONDON APARTMENT

This impressive apartment refurbishment features a fully distributed centralised TV system for viewing Sky and HotBird satellite; a music system enabled for CD and iPod listening; a Gigabit Ethernet and wireless data network and an integrated telephone system.

Two of the six rooms in the property also include dedicated AV source equipment and a second audio zone, driven by a Denon AV receiver.

SMC has discreetly installed all technology within the home and has ensured that it functions easily and simply, with the help of Philips Pronto controllers, and the original Sky and Humax remotes which operate via architecturally integrated dinky links.



WINNER
Prestige Audio

🇬🇧 ST PANCRAS PENTHOUSE

“A truly stunning solution within a challenging and unique environment” was the judges’ verdict on this imaginative system for a triplex penthouse in North London.

One intuitive, easy to operate Crestron system integrates the AV, lighting, HVAC, access control and security systems in the property with control provided by TPS-6L touchpanels fitted in the principal rooms. Ease of use was a key factor on this project, so simple touchscreen layouts and engraved buttons prevail.

As the property is primarily used for entertaining, the Pioneer plasma in

the main living space is hidden from view when not in use thanks to a bespoke Future Automation lift. In the themed guest bedrooms, LCD screens are concealed behind custom art picture frames whilst, in the master bedroom, the screen rises automatically, when required, on a motorised pop-up from the foot of the Clive Christian four poster.

Prestige Audio has effectively integrated operation of the private Otis lift into the control system. If the property is occupied, the lift call must be authorised from the Crestron panels. If the ‘goodbye’ button is

pressed on exiting, the lift is activated, the lights dim to off and the alarm is automatically armed only when the lift has gone. When the client then calls the lift, lights switch on and the alarm is disarmed before he reaches the hallway.

Finally, the property has its own mini-cherry picker for maintenance, due to its 15m ceiling height. This is hidden below a motorised trapdoor lift system and again activated by the Crestron system when necessary.

Prestige Audio
 +44 (0) 1923 801400
 www.prestigeaudio.co.uk

HIGHLY COMMENDED
LairdKing Ltd

LairdKing Ltd
 +44 (0) 1209 216912
 www.lairdking.co.uk

🇬🇧 VELINJI

From an initial request to upgrade Sky to Sky HD and distribute the feed around this Cornish property, LairdKing Ltd inspired its client to think beyond these modest ambitions. The result is a fully integrated smart system that can be accessed even when the client is away from home, in Australia.

The installation of a new HD cabling infrastructure allowed for the existing lighting system to be replaced, and the integration of KNX and Crestron control for AV, lighting, HVAC and security system operation.

The system also features Kaleidescape for movies and music, and a NuVo Essentia whole-home audio system. Mirror TVs, Artcooustic speakers and Amina in-wall speakers all help the technology blend perfectly with the home’s bright, clean and minimalist aesthetic.

“A well integrated solution” which clearly impressed the CEDIA Awards judges.



FINALIST
MR Domotica

MR Domotica
 + 31 1531 00001
 www.mr-engineering.nl

🇳🇱 FARMHOUSE

A comprehensive high-end home automation system that fits seamlessly into its rural farmhouse environment. MR Domotica has successfully integrated AV, lighting, climate control, intercom, CCTV and perimeter control systems. The family’s enormous DVD and CD collection is centrally stored on a Kaleidescape system which can then be distributed around the home for all to enjoy, whilst the heart of the audio system comprises an 18x18 autopatch matrix, featuring line-level distribution, gain control and a 10-band equalizer.

Tasked with making the system as user-friendly and as intuitive as possible, MR Domotica’s solution is so easy to operate that anyone, even guests and the client’s children, can fully control and interact with all the technological components.





WINNER
Censys Residential Control

KASTEEL DOMEIN AMERLOO

This all-encompassing technological solution for a 19th Century castle in Belgium is, quite literally, integration on a monumental scale.

With no fewer than 65 rooms to contend with and the date for the grand opening party set in stone, Censys embarked on a technically ambitious solution that delivered all the luxury and convenience of a 21st Century lifestyle, without detracting from the castle's traditional interior.

This expansive system includes: 17 in-wall touchpanels; 20 wireless

touchpanels; 80 keypads and 196 lighting zones. A Crestron PVID 16 zone, multi-room video system controls 21 sources including; a Kaleidescape media server, 10 satellite sources and 11 DVD players. There is a 60" Pioneer plasma, 13 Loewe LCD TVs and 2 Sony LCD TVs. Audio distribution is provided by a 26 zone, 24 source Crestron Adagio system and speaker provision includes; Bowers & Wilkins, KEF, Speakercraft and Boston Acoustics.

Climate control was of particular importance, not least because of the large collections of fine wine and art

housed within the castle. Consequently there is comprehensive HVAC provision, fuelled from 4 boilers with cooling delivered via Mitsubishi air-conditioning units. An overview of the climate in any given room is readily available from either the Crestron touchpanel or PC for precision control.

All in all, a stately home with state-of-the-art technological provision... and a worthy award-winner.

Censys Residential Control
+31 182 686 525
www.censyscontrol.com



HIGHLY COMMENDED
Smart Home

Smart Home
+41 22 990 08 00
www.smarthome.ch

BUCKINGHAMSHIRE LUXURY HOME

A highly commended accolade was justly awarded to Smart Home for a solution which has been expertly realised, despite a challenging set of criteria. The project which started in 2001 and took a staggering eight years to complete, was designed for a 17th Century, Grade 1 listed property in Buckinghamshire.

The centre-piece of this impressive system is undoubtedly the luxuriously-appointed cinema room with its ornate, domed ceiling, marble columns and 103" plasma, one of 36 screens in the property. The Music room boasts a 60" Kuro plasma, hidden by an Agath Mirror TV framed by an Italian hand-carved custom frame, whilst Wisdom Audio Sage L75s ensure that sound quality hits the right note. The full system integrates no fewer than 300 speakers, including 60 in the garden, 8 television lifts, a 13-player Kaleidescape system, Sky HD, BluRay, HD-DVD player and iPod docking in every room – all of which is controllable via a unifying Crestron control system.

FINALIST
Homotech Integration

Homotech Integration
+ 44 (0) 131 510 1250
www.homotechintegration.com

SCOTTISH FAMILY HOME

An impressive and ecologically-aware system designed for a client seeking to maximise the energy efficiency of his home by using a wide variety of systems, in conjunction with a number of alternative energy sources.

Homotech's innovative solution uses lighting control and zoned, logic-based heating control to its full energy-saving potential. Lighting levels have been programmed to dim in response to changes in sunlight, to maximise efficiency. Precision control of air-conditioning and underfloor heating is achieved via touchpanels, as is the management of solar and ground source heat facilities.

In addition to its environmental provision, the property also boasts a comprehensive audio-visual set-up and state-of-the-art security system.



FINALIST
SMC

SMC
+44 (0) 20 7819 1700
www.smc-uk.com

NOTTING HILL FAMILY HOUSE

A whole-house solution designed for a creative family who wanted to enhance their contemporary home with practical, simple technology that was easy and fun to use. Home to an avid music fan and audiophile, sound quality was paramount for particular rooms, whilst concealment of source equipment and speakers, crucial in others.

A dedicated home cinema meets the family's desire for showing movies whilst multi-room audio is delivered via Sonos, with Meridian speakers giving a high quality listening experience in the living room. Plaster in-wall speakers, bespoke cabinetry and motorised and manual sliding panel mechanisms have been used throughout to ensure that neither the interior aesthetics nor the family's technological enjoyment are compromised.



Best Innovative Solution - Residential

This category recognises excellence in the design and implementation of a single technical solution within a residential project. Showcasing that which is most definitely out-of-the-box, this is the category within which creativity and engineering innovation shine.



WINNER T&T Automation

WEST LONDON
GATED COMMUNITY

By placing a subwoofer where it's rarely been before, T&T Automation triumphed in this category for what the judges considered to be "an outstandingly innovative solution that demonstrates a tremendous amount of thought."

A solution designed for a client who wanted to enjoy really smooth bass throughout his top floor home cinema, located above noise sensitive bedrooms. With the ceiling the only logical place for subs within this irregular shaped room, T&T designed an ingenious solution which involved de-coupling the subwoofers from the main house structure to allow for a full bass response, without transferring noise and vibration to other rooms, especially the master bedroom below. Positioning the subs in this way would also allow for minimal colouration from



the room, effectively preventing the ceiling acting as a sounding board.

The solution was realised through the construction of a wooden frame that attached to the eaves at the apex. The subwoofers were then hung on the kind of aluminium structures usually seen in commercial or broadcast situations. Special acoustic hangars were used between the aluminium structure and the wooden frame, to isolate and damp the vibrations of the subs.

A neat, tidy and well-considered solution that demonstrates considerable innovation and delivers awesome sound!

T&T Automation
+ 44 (0) 1255 862830
www.tandt-automation.com



FINALIST Grahams Hi-Fi

Grahams Hi-Fi
+ 44 (0) 20 7226 5500
www.grahams.co.uk

WHERE DID THE PROJECTOR GO?

An innovative solution, designed as part of a projector-based home cinema set-up within a double height living space. With 5m high ceilings, the location of the projector was always going to be a challenge but Grahams Hi-Fi certainly rose to the occasion with this solution.

With a drop-down projector lift ruled out on aesthetic grounds, Grahams came up with an elaborate method of bringing the video projector out of a cupboard and in-line with the projector screen.

Using an ingenious motorised projector bracket, custom designed and engineered by Future Automation, the mechanism first opens the cupboard door and then elegantly swings the projector out into position and ready for use.



FINALIST The Pleasure Home

The Pleasure Home
+ 44 (0) 20 8420 4333
www.thepleasurehome.com

SMART WALL AV

An innovative, standalone Media Wall which enables this sports-loving homeowner to watch not one, not two, but three sporting events simultaneously. Incorporating one 65" HD Panasonic plasma and two, tiltable, 24" Dell monitors - this is one innovative multi-media solution that means you never have to take your eye off the ball.

This totally self-contained unit allows for the 'conceal and reveal' of the main television, on a sliding panel mechanism, whilst housing all associated equipment and racking, it even boasts its own, integral cigar humidor!

From its custom colour LED lit shelving, to its Makassar Ebony surround, this is as much an AV solution as it is a stunning piece of custom furniture.

Best Multi-Dwelling Installation

The Best Multi-Dwelling installation is designed to recognise installers who, through the integration of technology, have added value, improved marketability and boosted sales for a developer.



WINNER Finite Solutions

GREENHOUSE

Finite Solutions were worthy winners for what was deemed to be "a unique installation that brings social and environmental responsibility to the fore".

A technological solution for a developer whose vision was to create the UK's first 'zero carbon' multi-dwelling development; this innovative system integrates home automation with the latest cutting edge environmental technologies.

The development's environmental credentials include; heating and cooling to each apartment via ground source heat pumps and VRF, roof mounted solar thermal panels to heat the hot water system and heating and

cooling recovery achieved through a district heating system. Central rainwater and grey water tanks provide recycled water for toilet flushing and washing machines and wind turbines provide communal energy for lights and lifts.

And, the technical credentials are equally as impressive. Each apartment has its own integrated energy monitoring system which, using the TV as an interface, allows the owner to not only monitor their own energy usage, but also the amount of energy the building is generating and using as a whole. The system also allows occupants to form an 'energy co-

operative', with Greenhouse acting as energy supplier and invoicing homeowners by net usage, taking into account energy produced on site and energy 'exchanged' between apartments. In addition, homeowners can book an electric pool car from the on-site car club, get real-time information on the next buses and trains departing from local stations and access an integrated community notice board to keep in touch with the wider community.

Finite Solutions
+ 44 (0) 113 255 4765
www.finitesolutions.co.uk



HIGHLY COMMENDED SMC

HEATHWEST

SMC
+44 (0) 20 7819 1700
www.smc-uk.com

An "accomplished solution" for a development of four new build luxury houses in North London. The brief was to find the perfect level of technology expected at this end of the market and to maximise the value of the houses, whilst meeting a very strict budget. As the properties were being marketed as family homes, the TV, data and telephone cabling had to allow the greatest flexibility for high definition TV, music, video streaming and gaming.

In meeting the brief, SMC installed a comprehensive automation solution which included; Lutron Homeworks throughout, BPT Access Control, Nacoss Grade 3 security systems, CCTV for the gardens and communal areas, Sky TV, FM/AM terrestrial reception, ceiling speakers in the principal rooms and Amina plastered in speakers in the entrance halls.

A high level of integrated control of the lighting, blinds, music and HVAC was achieved using a specially developed Lutron keypad. The properties were pre-wired for touchscreen control and for HD distribution throughout and, for added flexibility, the room by the swimming pool was wired for use as either a gym or cinema room.

A highly commended project which strikes the right balance between pre-wired infrastructure and built-in operational systems.

FINALIST SMC

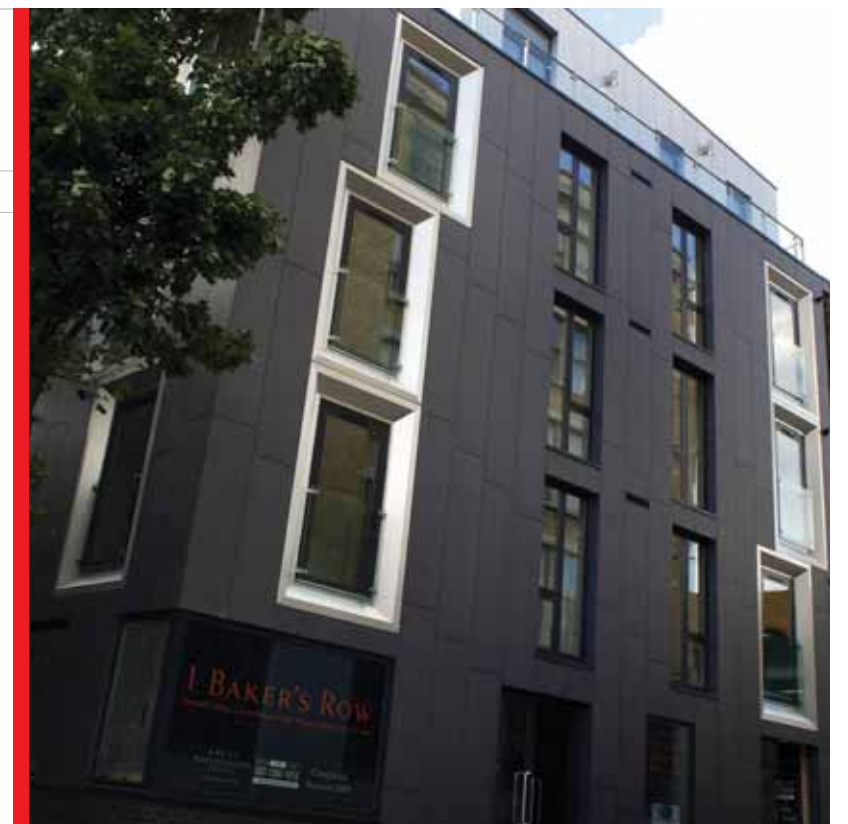
BAKER'S ROW

SMC
+44 (0) 20 7819 1700
www.smc-uk.com

An integrated technological solution for a striking development of eight one and two bedroom, luxury apartments in the fashionable Clerkenwell Green conservation area.

The developer was clear from the outset that these apartments would have a high architectural and technological specification and be a place where innovation meets discreet luxury – and all at a price that would maximise their investment.

A simple wiring infrastructure was designed to deliver TV, data and telephone to the main rooms and allow a TV with surround-sound set up in the main living space. A Systemline modular multi-room audio system was installed to feed ceiling speakers in the living room and bedrooms and an Integrated TV Reception System (IRS) distributes Sky+ and Sky HD to all apartments, from one satellite dish on the roof.



Best Marine Installation

From audio-visual and environmental, to vessel management and navigation; the integration of technology in a marine environment poses its own unique challenges. The Best Marine installation category recognised the ultimate installation of technology on a superyacht.



WINNER Sensory International

🇬🇧 SLIPSTREAM

For luxury charter vessel Slipstream, the client demanded intuitive to operate and reliable on-board entertainment systems. The installer has risen confidently and capably to the challenge with a well-thought out and integrated solution.

The Crestron-controlled entertainment system consists of individual, stand-alone sub-systems located in every cabin, each featuring a satellite receiver, media client, iPod docking station, audio video switching and amplification.

With the exception of each Kaleidescape media client, which communicates to a central server for access to content, the AV equipment operates as a stand-alone system. Even if this Kaleidescape connection is lost, a cabin guest can still select and view local discs, satellite channels or access their own iPod.

Audio players meanwhile provide four independent audio feeds to external areas and for party or vessel wide audio, with guests or crew able to set a single piece of music playing throughout the yacht.



Photography Courtesy: Simon McBride

The Sky Lounge features a completely hidden projection system. A motorised projector lift built into the deck head design ensures invisibility when retracted, whilst a sofa unit with a motorised seating section slides back and allows a 90" wide, tab-tensioned projection screen to rise out of its base. A local receiver provides 5.1 surround sound in this area, with motorised blinds closing to finish the transformation.

Other motorised devices on the vessel conceal displays when not in use. The Main Saloon features a lift and swivel mechanism in a piece of furniture behind a sofa and the Master Cabin display is mounted within a motorised artwork frame, where the artwork conceals the display when not in use. When a video

source is selected, the artwork automatically rolls out of the way.

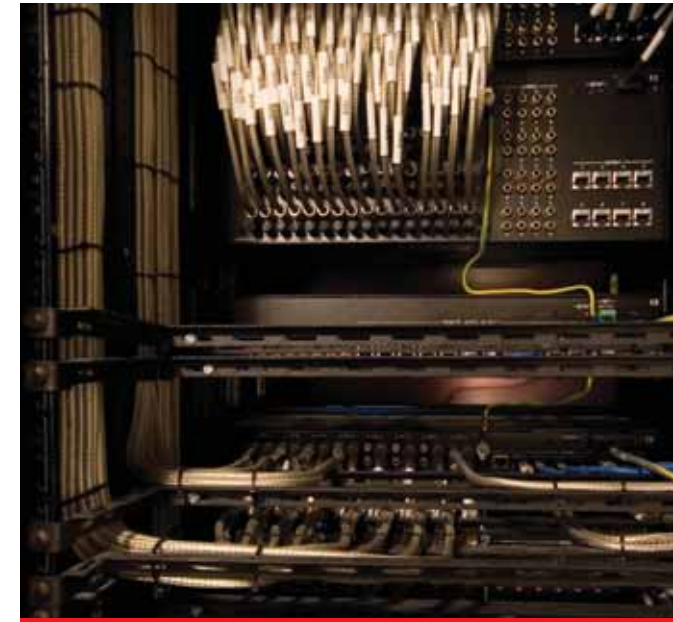
Every detail was considered, including all of the in-ceiling speakers being custom painted to match the ceiling material into which they were mounted.

The simple nature of the system, how easy it is to use and its continued reliability have been praised by everyone lucky enough to be onboard. In the words of the client, "Sensory International bring a unique and professional team to each project which assists us greatly in constructing a unique yacht that outperforms our expectations". They are worthy winners!

Sensory International
+ 44 (0) 1625 505720
www.sensoryinternational.com

Best Dressed Rack

The Best Dressed Rack category takes a look behind the scenes for examples of design and installation excellence. The judges were also looking for demonstrations of innovation and intelligent value engineering.



WINNER T&T Automation

🇬🇧 WEST LONDON FAMILY MANSION

Described as "picture perfect" by the judges, the two-rack approach taken by T&T Automation on this project allows for future expansion of the system, correct air circulation and thermal management and an easy-to-see, neat and tensionless installation of cables and equipment.

Both racks for the mansion were pre-built at the company's premises so that they could be tested and run-in before moving on-site where they have effectively been fitted into a hallway cupboard. In a thoughtful solution to servicing, the back wall of this cupboard has been removed to allow access through the eaves from an adjacent room.

The cabling has been installed with minimum bend radii taken into consideration and properly terminated with full contact compression terminations to reduce their resistance and create a more reliable and better contact. The cables are labelled with printed-on shrink-wrap sleeves which are all turned to face the viewer, simplifying maintenance and troubleshooting.

Spike, surge, black and brown-out sensitive equipment in the racks is backed-up using a 1500VA UPS per rack. Equipment not on UPS has its power-conditioned as a minimum.

Overall, it's a sensible and sensitive installation that enables quick and cost-effective upgrading, greater equipment reliability, improved energy consumption and easy access for maintenance and servicing.

T&T Automation
+ 44 (0) 1255 862830
www.tandt-automation.com

FINALIST Hometech Integration

🇬🇧 SCOTTISH FAMILY HOME

Hometech Integration
+44 (0) 131 510 1250
www.hometechintegration.com

Three, specially designed and built 50V racks, incorporating over 1000m of cabling, are the brains at the heart of this enormous home automation system.

Hometech Integration managed the huge volume of cables in a way which enabled each rack to move forward independently on heavy duty casters, allowing access to each in turn, without any unnecessary cable stressing.



FINALIST Sensory International

🇬🇧 UBER INTERIORS

Sensory International
+ 44 (0) 1625 505720
www.sensoryinternational.com

All of the structured cable on this installation is presented through a patch panel system, with the main equipment rack built off-site and designed to include a pre-configured cable loom. The rack was then brought to site and fitted in one simple procedure.

It features components to provide multi-room audio distribution and high-definition video to multiple audio zones and displays around the property.



THE CEDIA AWARDS ENTRANTS

It takes time and effort to enter the CEDIA Awards and we would like to thank all those who have taken part. We would like to extend our congratulations to everyone who has been involved in the scheme; they are collectively responsible for raising the bar, both in terms of the standard of submissions and expectations of what can be achieved. The competition this year was truly more intense than ever.



Sensory International, UK



Smartcomm, UK



Finite Solutions, UK



DSE Group, UK



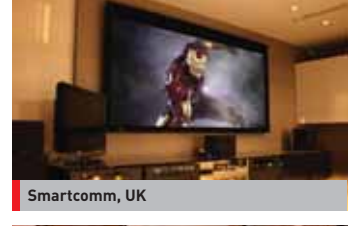
DSE Group, UK



Finite Solutions, UK



Sensory International, UK



Smartcomm, UK



Grahams Hi-Fi, UK



Sound Decisions, India



AudioVision, UK



Prestige Audio, UK



Digital Luxe, Spain



Smart Business, Spain



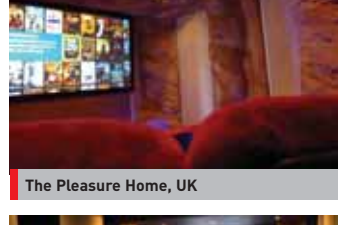
The Big Picture, UK



Sensory International, UK



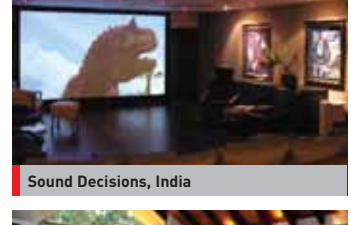
E-Life, UK



The Pleasure Home, UK



SMC, UK



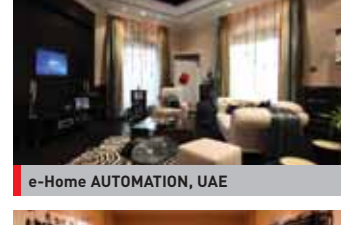
Sound Decisions, India



Sound Decisions, India



Finite Solutions, UK



e-Home AUTOMATION, UAE



Smart Business, Spain



Electronic Architects, South Africa



T&T Automation, UK



The Big Picture, UK

Panasonic

ideas for life

looking for true black?

or black that's true?

Panasonic
CHT

*Meet our professional-level custom home theatre displays.
They leave no detail overshadowed*



CEDIA Region 1
Unit 2, Phoenix Park, St Neots,
Cambridgeshire, PE19 8EP, UK

Tel: +44 (0)1480 213744
Fax: +44 (0)1480 213469
Email: awards@cedia.co.uk
Web: www.cedia.co.uk/awards



Exclusively distributed in the UK by AWE Europe Ltd

AWE Europe Ltd B1 Longmead Business Centre, Blenheim Road, Epsom, Surrey, KT19 9QQ
sales@awe-europe.com tel: +44 (0)1372 729 995 fax: +44 (0)1372 729 771 www.awe-europe.com

